

ETM8120-2/3 & ETM8130-2/3

Range of Intelligent Cellular Terminals



For use with Landis+Gyr E550 and E650 meters



| Product | ETM8120-2 | ETM8120-3 | ETM8130-2 | ETM8130-3 |
|--|--|----------------------------------|---|----------------------------------|
| Cinterion Module Inside | TC63i | | EU3-E | |
| Frequency Range | 2G Quad-Band GSM/GPRS 850/900/1800/1900MHz | | 2G & 3G Dual-Band UMTS 900/2100MHz Dual-Band GSM/GPRS 900/1800MHz | |
| Dimensions - mm | 85 x 85 x 33 | 78 x 156 x 63 | 85 x 85 x 33 | 78 x 156 x 63 |
| Weight - g | 76 | 350 | 76 | 350 |
| Power Supply | +5VDC to +35VDC | 58VAC to 240AC, 125 to 245 DC | +5VDC to +35VDC | 58VAC to 240AC, 125 to 245 DC |
| Key Application | E550 P05 and newer | E550 P04 | E550 P05 and newer | E650 with CU-B4/2 |
| Power Consumption | 400mA | | 400mA | |
| Nameplate Power Consumption | <200mA | | <250mA | |
| Typ. Power Consumption 12 VDC - Transmitting | <30mA | | <35mA | |
| Typ. Power Consumption 12 VDC - Idle | 0.7mA | | 0.7mA | |
| Typ. Power Consumption 12 VDC - Sleep Mode | N/A | | N/A | |
| Typ. Power Consumption 12 VDC - Charging | N/A | | N/A | |
| Operating Temperature Range | -40°C to +55°C | | -40°C to +55°C | |
| Data Transmission | | | | |
| - HSDPA | x | | DL: max 3.6 Mbit/s UL: max 384kbps | |
| - UMTS | x | | DL: max 384kbps UL: max 384kbps | |
| - EDGE | x | | Class 10 | |
| - GPRS | Class 12 | | Class 10 | |
| - CSD | ✓ | | ✓ | |
| - SMS | ✓ | | ✓ | |
| - Fax | x | | x | |
| - TCP/IP | ✓ | | ✓ | |
| Interfaces | | | | |
| - RS232 Serial | RJ45 | RJ12 | RJ45 | RJ12 |
| - Power Connector | RJ45 integrated | Bare wire | RJ45 integrated | Bare wire |
| - Antenna Connector | SMA Female | | SMA Female | |

Features:

UMTS or EDGE

Mechanically designed for E550 and E650 Terminal Cover

Remote configuration, upgrade

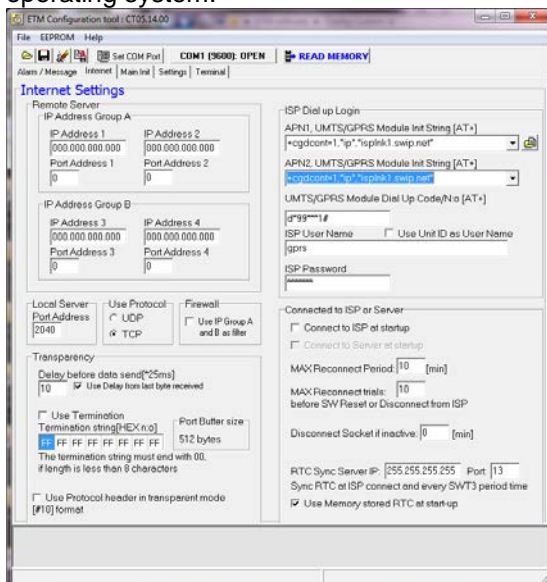
Signal Strength displayed via meter or LED

SMS modem control

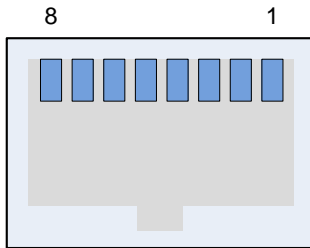
This product family of UMTS and GSM wireless modems is designed for use with the Landis+Gyr E550 and E650 meters. The product is built on a common circuit board with different modem mounting options with different mechanical options. The result is a family of devices that are suitable for use with both the E650 and E550 family of meters. Both meters have been extensively tested with the various modem variants to ensure reliable operations.

When the modem is used with the E550, the modem is powered directly from the extremely reliable and robust power supply of the meter. When used with the E650, the modem is housed in a CU-ADP2 from Landis+Gyr that both serves as a mechanical housing for the modem as well as a robust power supply. The industrial grade supplies are meet or exceed burst test standard, voltage surges immunity test and over-current test commonly applied in metering standards. For specifics regarding the supply design, please consult the E550 Technical Specification and the CU-ADP2 technical specification as appropriate.

The ETM8120 and ETM8130 are based on the firmware and hardware platform of the ETM line of terminals that is widely used in the utility industry. The modem features an easy to use configuration tool running on windows operating system.



RJ45 Connector for ETM81xx-2



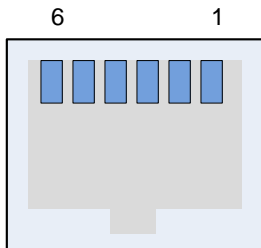
(View into tip of
Cable connector)

| Pin | Signal |
|-----|--------|
| 1 | RTS |
| 2 | CTS |
| 3 | TXD |
| 4 | GND |
| 5 | GND |
| 6 | RXD |
| 7 | DTR |
| 8 | Supply |

Configuration for E550



RJ12 Connector for ETM81xx-3



(View into tip of
Cable connector)

| Pin | Signal |
|-----|--------|
| 1 | CTS |
| 2 | TXD |
| 3 | GND |
| 4 | DTR |
| 5 | RXD |
| 6 | DSR |

Configuration for E650



(Terminal Cover Ordered Separately)

ETM Mattek AB
Ekbacksvägen 32
SE-168 69 Bromma
Sweden
Tel: +46 (0)8 25 28 75
Fax: +46 (0)8 80 11 10
Email: etm@etm.se
Web: www.etm.se

ETM Communications AB
Nioörtsvägen 28 A
SE-126 32 Hägersten
Sweden
Tel: +46 (0)8 5490 2070
Fax: +46 (0)8 5490 2060
Email: info@etmc.se
Web: www.etmc.se

ETM Pacific Pty Ltd
Suite 6, 273 Alfred Street
North Sydney NSW 2060
Australia
Tel: +61 (0)2 9956 7377
Fax: +61 (0)2 9956 5791
Email: info@etmpacific.com.au
Web: www.etmpacific.com.au

